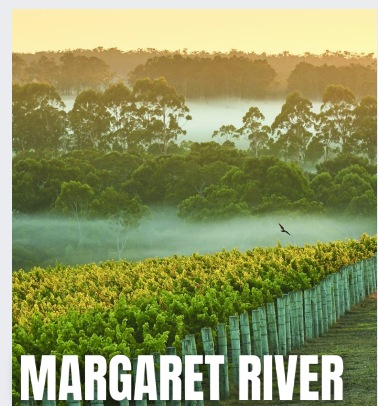
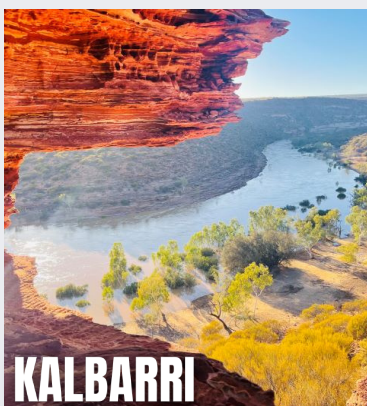
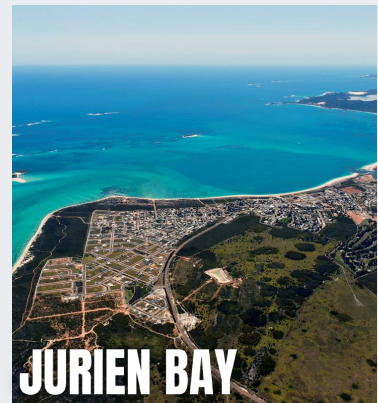
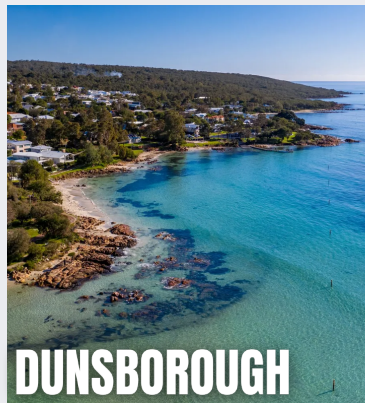
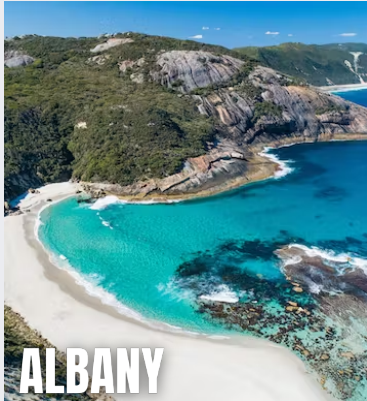


18 OF EWSC HOLIDAY HOMES



Energy West Social Club
Energising your Wellbeing since 1949

Last Updated March 2024



ALBANY

Explore the beauty of Albany with EWSC's two Holiday Homes, just a 5-minute drive from the city centre. These spacious houses feature 3 bedrooms, 2 bathrooms, and a comfortable open-plan living area. Overlooking lush parklands and a mere 3-minute walk from Middleton Beach, they offer the perfect base to discover Albany's attractions.

Main Attractions: Royal Princess Harbour, The Gap and Natural Bridge, Albany's Historic Whaling Station, Albany Wind Farm, Middleton Beach, Emu Point, Little Beach, and more!



6 guests



3 bedrooms
5 beds



2 bathroom



6 guests



3 bedrooms
5 beds



2 bathroom





BUSSELTON

Discover Busselton with EWSC's two Holiday Homes, a short 15-minute walk or 5-minute drive from the iconic Busselton Jetty. These houses offer 3 spacious bedrooms, 2 bathrooms, and an inviting open-plan living area. Nestled just a 10-minute walk from the tranquil waters of Geopraphe Bay, they are the perfect down south getaway.

Main Attractions: Busselton Jetty, Busselton Foreshore, Old Butter Factory Museum, Sunday Markets, Geopraphe Bay, and more!



6 guests



3 bedrooms
5 beds



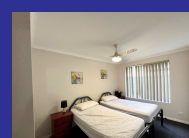
2 bathroom



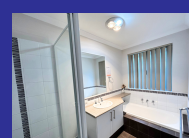
6 guests



3 bedrooms
5 beds



2 bathroom





CAPE VIEW RESORT

Located between Busselton and Dunsborough, EWSC own and operate two Holiday Homes nestled within the Cape View Beach Resort. These homes feature 3 bedrooms, 2 bathrooms, and access to the resort facilities including two swimming pools (indoor and outdoor), BBQs, kids playground and a gym. Just a 5-minute walk to Geographe Bay, it's the perfect beach getaway.

Main Attractions: Located between Busselton, Dunsborough, and Margaret River, explore endless attractions at various locations.



6 guests

3 bedrooms
4 beds

2 bathroom



6 guests

3 bedrooms
4 beds

2 bathroom



DENMARK

Unwind in Denmark at EWSC's stunning Federation Holiday Home, just a 2-minute drive from the town centre. This home offers 4 bedrooms, 1 bathroom, and a spacious open-plan living area. With beautiful gardens and and a close proximity to Wilson Inlet and Ocean Beach, it's the ideal retreat.

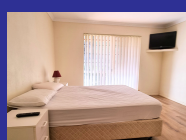
Main Attractions: Green Pool, Monkey Rock, Elephant Rocks, Ocean Beach, Valley of the Giants, Wilson Inlet, Denmark Town and more!



6 guests



4 bedrooms
5 beds



1 bathroom





DUNSBOROUGH

Discover Dunsborough with EWSC's two Holiday Homes, offering 3 bedrooms, 2 bathrooms, and open-plan living areas. Located a short drive from the town centre and minutes from the beach, these homes offer a serene coastal escape surrounded by nature. There is also breathtaking trees and creeks surrounding the properties.

Main Attractions: Meelup Beach, Dunsborough Town Centre, Caves, Yallingup, and more!



6 guests



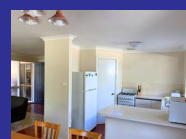
3 bedrooms
4 beds



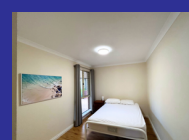
2 bathroom



6 guests



3 bedrooms
4 beds



2 bathroom





JURIEN BAY

Experience Jurien Bay with EWSC's two Holiday Homes, offering 3 bedrooms, 2 bathrooms, and spacious living areas. Located within the Seafront Estate, enjoy access to all resort facilities, including two swimming pools and a large grass area with gazebos and BBQ's available. Plus, it's just a 2-minute walk from the beach!

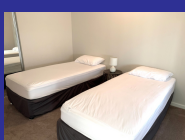
Main Attractions: Fishing, Jurien Bay Boat Harbour, the Pinnacles, Jurien Bay Jetty, the beach and more!



6 guests



3 bedrooms
4 beds



2 bathroom



6 guests



3 bedrooms
4 beds



2 bathroom





KALBARRI APARTMENTS

Within Kalbarri, EWSC own and operate four Holiday Homes. Two of these homes are located within the Kalbarri Riverview Resort Apartments. These homes have 2 bedrooms, 1 bathroom, and open planning living areas. When staying at either property, you get access to all the resort facilities, including a 25-meter swimming pool with an accompanying children's pool, two spas, BBQ's, Tennis, Basketball and Volleyball courts as well as free in-house movies. They are also located 1-minute walk from the river and a 20-minute walk to the ocean.

Main Attractions: Kalbarri National Park Coastal Cliffs, Red Bluff, Pink Lake, Island Rock & Natural Bridge, Kalbarri Sky Walk, Fishing, and more!



6 guests



2 bedrooms
5 beds



1 bathroom



6 guests



2 bedrooms
5 beds



1 bathroom





KALBARRI TOWNHOUSES

Within Kalbarri, EWSC own and operate four Holiday Homes. Two of these properties are townhouses situated side by side, both boasting 3 bedrooms, 2 bathrooms and an upstairs living area. With enormous balconies, you can sit back and take in the breathtaking view of the Murchison River meeting the Indian Ocean.

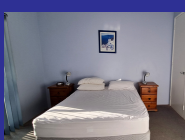
Main Attractions: Kalbarri National Park Coastal Cliffs, Red Bluff, Pink Lake, Island Rock & Natural Bridge, Kalbarri Sky Walk, Fishing, and more!



6 guests



3 bedrooms
4 beds



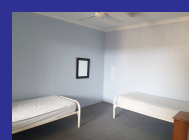
2 bathroom



6 guests



3 bedrooms
4 beds



2 bathroom





MANDURAH

Explore Mandurah with EWSC's Holiday Home. Centrally located within the hub of Mandurah's town centre, this home offers 3 bedrooms, 1 bathroom, and an open living area.

With easy access to Mandurah's attractions including beaches, estuaries, and the town's vibrant waterfront, this is the perfect property to have a relaxing holiday from the hustle and bustle of the city.

Main Attractions: Crabbing, Fishing, Giants of Mandurah, Mandurah Boardwalk, and more!



6 guests



3 bedrooms
4 beds



1 bathroom





MARGARET RIVER

Experience Margaret River with EWSC's two Holiday Homes, offering 3 bedrooms, renovated interiors, and a tranquil bush setting. Located a short walk from the town centre, these homes provide easy access to wineries, gourmet food outlets, and natural attractions.

Main Attractions: Wineries, Margaret River Chocolate and Cheese Factory, Caves Road, Hamelin Bay, and more!



6 guests



3 bedrooms
4 beds



1 bathroom



6 guests



3 bedrooms
4 beds



1 bathroom

